



July 2009

This document contains information about the updated features found in the Command Center Module version 1.161. This version will require that you not only update your CCM software, but also the software on your individual Eagle Eye or Barracuda systems.

Update CCM Software

All software updates for your CCM system are provided for free from Predator Games. The *UPDATE SOFTWARE* function can be accessed by clicking on the *SYSTEMS* menu option at the top of your screen. Your CCM must be connected to the internet for this function to work. Once you have clicked on the *UPDATE SOFTWARE* function your system will automatically begin downloading the newest version of our software from our internet server. You will see a progress bar on your screen displaying the status of the download. When the download is complete you will be asked to restart your CCM software in order to activate the new version.

Note: For the July 2009 update you will actually need to do the Update CCM Software two times. Just repeat the above steps a second time in order to be fully up to date.

Update Systems

We have included with each CCM the ability to update the software on the Eagle Eye and Barracuda systems wirelessly through RF communication. The wireless capability is enabled in the gun software version 2.04 and greater. If you are operating on a gun software version less than 2.04 please contact Predator Games technical support. **YOU MUST FOLLOW DIRECTIONS EXACTLY AS STATED OR YOU MAY CORRUPT YOUR SYSTEM'S SOFTWARE.**

Warning 1: Barrel Cable

While the system is updating **never** pull the barrel cable from your system. This will result in your gun powering off in the middle of the update process. There is a high percentage chance that this will corrupt your system.

Warning 2: Batteries

While the system is updating never pull the batteries out of your system. This will result in your gun powering off in the middle of the update process. There is a high percentage chance that this will corrupt your system.

Warning 3: Power

It is highly recommended that you use new batteries when updating your system. If your batteries run low on power during the update process this will result in your gun powering off. There is a high percentage chance that this will corrupt your system.

Warning 4: Patience

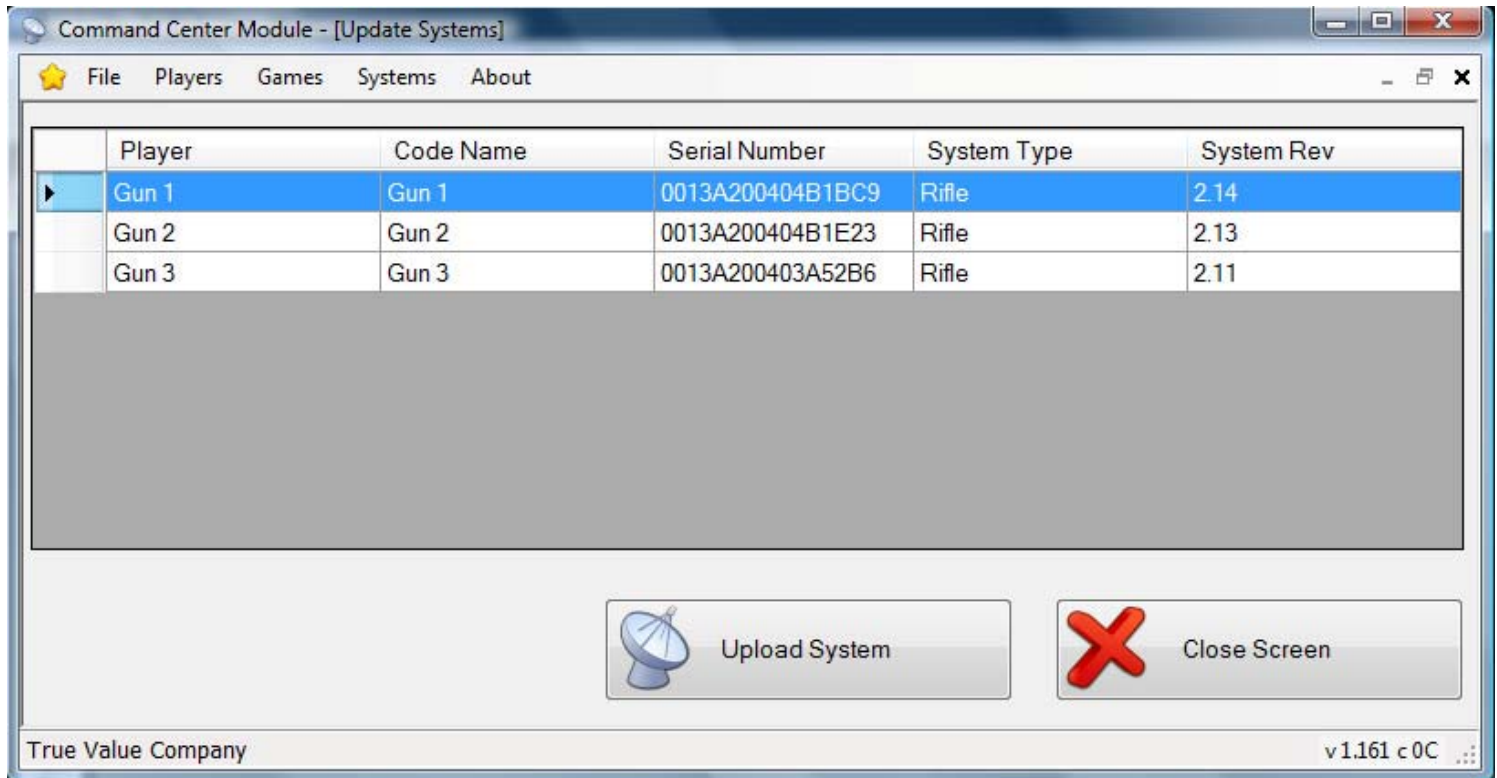
It may take several minutes (average of two minutes) to update each system. Do not power off your unit once you have started the update process. There is a high percentage chance that this will corrupt your system.

Oops!

You decided to not read our warnings and one of your systems was corrupted. You will need to contact our technical support department at 888-950-1221 in order to resolve the issue. Be prepared to send you unit back to our factory in order to reload the software.

Update Systems

The *UPDATE SYSTEMS* screen can be accessed by clicking on the *SYSTEMS* menu option at the top of your screen. This screen will display a list of all systems currently synced to your CCM. Each system will display the current revision of the unit. In order to upload new software to your systems you will need to follow these steps:



Step 1: Select Unit

The individual unit you wish to sync must be powered on and synced to the CCM server before continuing. From the *UPDATE SYSTEMS* screen select the unit you wish to update. Units are signified by their serial number. The serial number of each unit can be found by reading the sticker under the battery compartment of the unit or by entering the *SETUP* menu item of your unit. Please see your User Manual that came with your system. When you have determined which unit you wish to update you can click on the player and then click on *UPLOAD SYSTEM* button to begin.

Step 2: Update Progress

Your individual Predator Games system will display the following screen “Downloading Update. Status XX% Complete”. After approximately two minutes (depending on RF traffic) your system will reach 100% and then display the following screen: “Verifying Software”. If at any time your system does not properly download the software it will start the process over and try to once again download the software. It will automatically repeat this process until the download is complete. Once your system has downloaded and verified that the software is correct it will power off your unit. Your CCM software will also notify you that this process is complete.

Step 3: Power Up Unit

You can now turn your individual system back on by pressing the POWER button located on your unit. You will notice that your system will start flashing the lights on your unit in various sequences. **DO NOT AT ANY TIME LOOSE POWER DURING THIS SEQUENCE OR YOU MAY CORRUPT YOUR SYSTEM.** During the installation process nothing will show up on your display, instead the LEDs on your system will go through the following sequence:

- Right LED: Reading Status (should be very short)
- Back LED: Verifying image on external flash
- Right and Back LED: Installing image onto internal flash (longest portion)
- Left LED: Verifying installed image on internal flash
- All LEDs: Booting application

Your system will now boot up into your gaming software as normal with the new software installed.

New Feature List

The following represents the list of new features found in version 1.161. As mentioned earlier you will need to update both your CCM software and the software of your Eagle Eye or Barracuda system in order to gain the benefits of all the new features.

Medic Mode

Per customer request we have changed the healing time of the Medic to one second. This now matches the invincibility time after a person has been hit.

Integrated Signup to PredatorGames.net

You can now sign up a *New Unknown Soldier* and automatically create an account for them at PredatorGames.net. This will allow the player to track their scores at our website and receive ranking based on how they compete against other players. In order to do this, you must be connected to the internet.

[Create PredatorGames.net account](#)

Edit Player Information

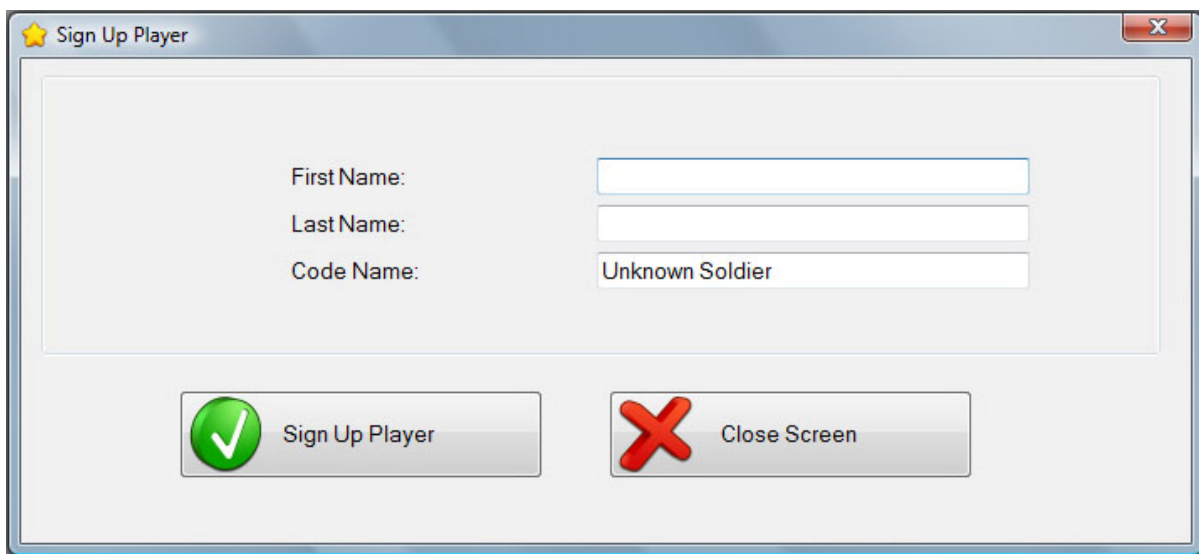
You can now edit all information for an Unknown Soldier directly from the Manage Player screen. This includes changing the players Full Name and Code Name.

Basic Game Point Values

All Basic Games will now earn up to 5 points per hit for any Full Member of PredatorGames.net.

Backyard Party Games

We have added a streamlined option to our background screen called Backyard Party Games. This allows field owners and rental centers to quickly set up players with a simple sign up form.



Offline Help Files

All help files can now be viewed even if you are not connected to the internet. Keep in mind that the internet will always have the most recent files.

Change RF Channels

In some unique instances you may have difficulties communicating with your Eagle Eye or Barracuda system. If this happens you should first contact Technical Support. We have added the ability to change your RF channel of both your individual systems and your CCM server in case it is found that an outside source is utilizing all the bandwidth on the default RF channel.

Rejoin Game on Power Drop

We have added a highly requested feature to be able to rejoin a game that is in progress in case your unit dropped out due to power loss (typically batteries dying). If at anytime during a game you loose your Sync to the server, please follow these steps to Re-Sync and rejoin a game in progress.

1. Go to the *ACTIVE PLAYERS* screen
2. Select the Player that needs to be Re-Synced due to power loss
3. Click the *MANAGE PLAYER* button at the bottom of the screen
4. Click the *SYNC EQUIPMENT* button
5. Your system will now Re-Sync up to the server and start in the game where they left off. It will maintain the correct amount of ammunition, hits, kills, health, and time as to what is shown on the CCM Manage Game screen.

Re-Sync all Units

This new feature is another highly requested addition. The new Re-Sync button will allow you to quickly synchronize all Eagle Eye and Barracuda units. This new feature will dramatically decrease the amount of setup time that you spend in between games. In order to use this feature please follow these steps.

1. All your units must first be synchronized to the server manually. You can quickly determine if this is true by opening the *ACTIVE PLAYERS* screen. Any player with a Gun Address filled in has been synchronized to the server.
2. Turn on the power to each of your Eagle Eye or Barracuda system. Leave them at the main menu. There is no need to go into the Sync sub-menu. Just turn them on and let them sit.
3. Click on the *RE-SYNC* button at the bottom of the *ACTIVE PLAYERS* screen. The server will now search for each Gun Address in its database and automatically synchronize each gun.
4. Any guns that are not automatically found during the Re-Sync process will loose their Gun Address and will need to be manually synchronized again.



Change in Ammo Update

In previous versions of the CCM software, ammo was updated automatically in the Manage Game screen approximately every 5 seconds. Unfortunately with very large games this would cause enough RF traffic that it would create lag with the messages traveling back and forth between the units. The CCM will now be updated with the following events happen:

1. A player hits another player
2. A player heals another player
3. The game timer runs out
4. A remote Kill is issued from the Manage Game screen
5. A Stop is issued from the Manage Game Screen
6. A Refresh is issued from the Manage Game Screen (see below)

Refresh

We have added a new feature to the Manage Game screen in the form of a Refresh Button. The Refresh button will poll each unit on the field and report back with updated ammunition, kills, hits, health, and time remaining. It may be done during the game or even when the game has stopped. This is a useful feature for a variety of reasons:

1. This allows you to on demand see the most current game data stats of each player
2. It will allow you to synchronize the player data if that player would happen to be out of RF transmission range. If at any time a players gun does not show the same data as the Manage Game screen you need only to click on the Refresh button to synchronize the information.



Technical Support

Predator Games Technical Support can be reached at the following contact sources:

Predator Games
640 N. Prospect Drive
Whitewater, WI 53190
Phone: 888-950-1221
E-mail: service@predatorgames.com